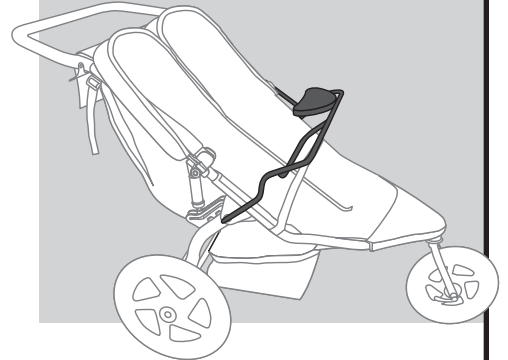




# Duallie Infant Car Seat Adapter Instructions

Congratulations on your purchase of the BOB Duallie Infant Car Seat Adapter (ICSA). It is designed to allow the attachment of an Infant Car Seat to your BOB Duallie Stroller. Please refer to the tables at right for details of compatible strollers and car seats.

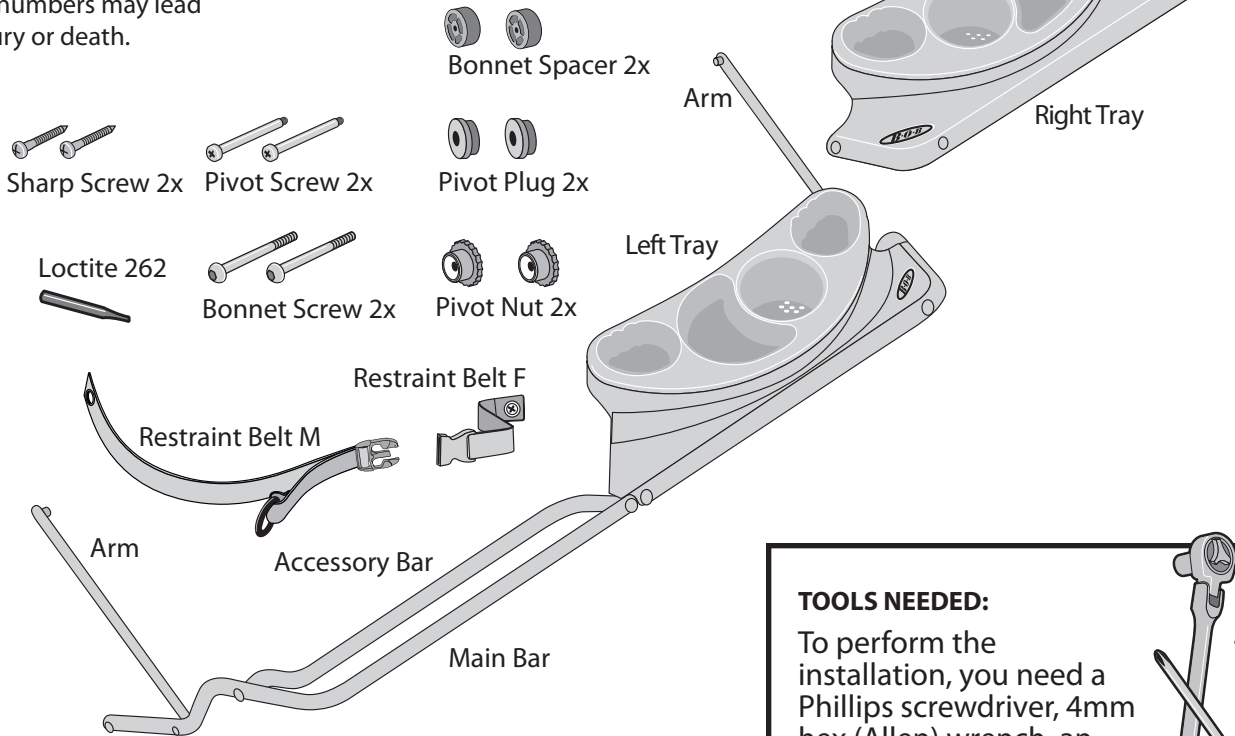
Car Seat Compatibility		
Brand	Model	Year (s)
Britax	Companion™	2003-2008
Graco®	Snug Ride®	2003 and newer
Graco®	Snug Ride® 30	2010 and newer
Graco®	Snug Ride® 32	2008 and newer
Graco®	Snug Ride® 35	2009 and newer
Graco®	Safe Seat™	2006 and newer
Peg Perego®	Primo Viaggio™	2003 and newer
Peg Perego®	Primo Viaggio SIP™	2006 and newer
Peg Perego®	Primo Viaggio SIP™ 30/30	2007 and newer



BOB® Stroller Compatibility	
Model	Serial Number Range
Duallie®	AD000001 - AD999999
Ironman® Duallie	AE000001 - AE999999
Revolution® Duallie	AH000001 - AH999999
Revolution Duallie 12"	AL000001 - AL999999
Stroller Strides® Duallie	AM000001 - AM999999

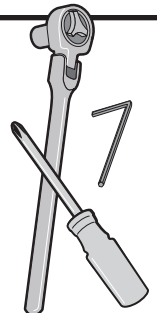
## WARNING

This product is compatible with strollers that have a serial number within the range listed. Using this product on strollers with incompatible serial numbers may lead to injury or death.



### TOOLS NEEDED:

To perform the installation, you need a Phillips screwdriver, 4mm hex (Allen) wrench, an 8mm socket wrench and a rag or paper towel.



## TAKE TIME - READ AND UNDERSTAND INSTRUCTIONS COMPLETELY!

Before attempting to assemble or use your new Duallie ICSA, read and understand these assembly instructions completely, as well as the warnings at the end of this document, to insure proper assembly and safe operation.

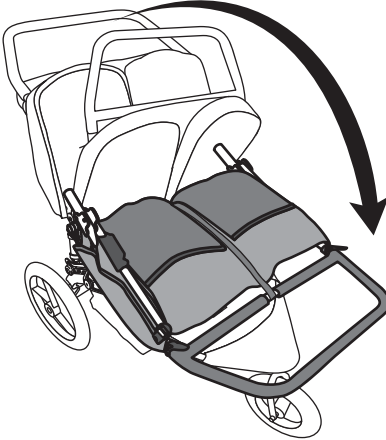
**If you are unclear on any point, contact your dealer or BOB before use.**

# INSTALL CANOPY SPACER

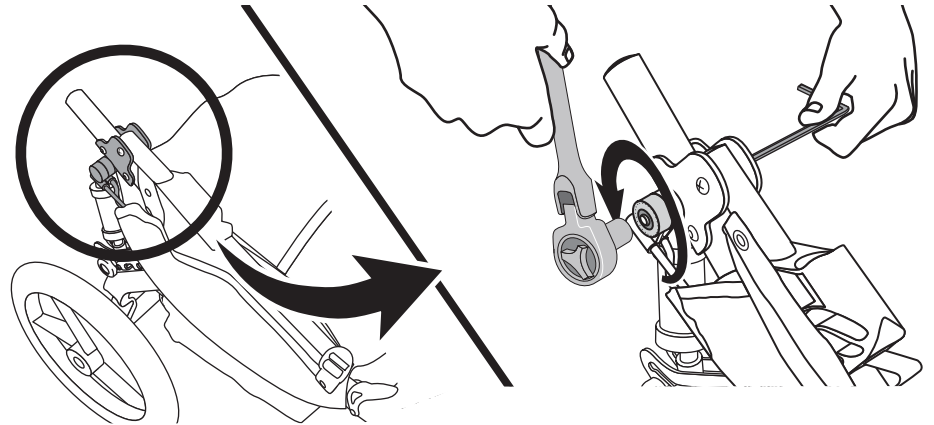
**1 SET PARKING BRAKE.** See the "Parking Brake" section of your stroller owner's manual.

## 2 COLLAPSE HANDLE BAR

Squeeze red handles and fold handle bar forward.



## 3 REMOVE EXISTING BONNET SCREW

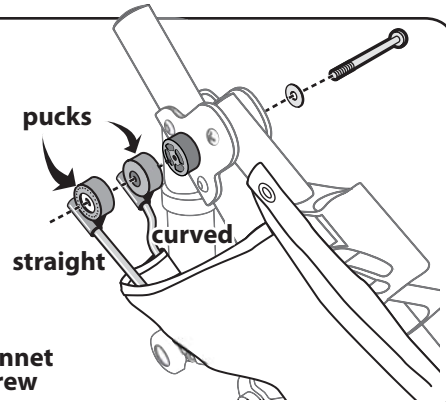


Use an 8mm socket wrench on locknut and a 4mm hex wrench on bonnet screw head.

Turn socket wrench counter-clockwise.  
Remove locknut and disassemble.

## 4 REASSEMBLE CANOPY

Insert new longer **bonnet screw** through washer, stroller tube, spacer, puck with curved stay and puck with straight stay.



Bonnet Spacer



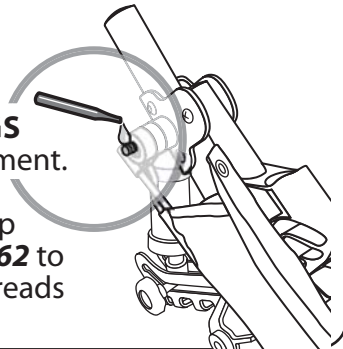
Bonnet Screw

## 5 APPLY LOCTITE 262



**SEE WARNINGS** at end of document.

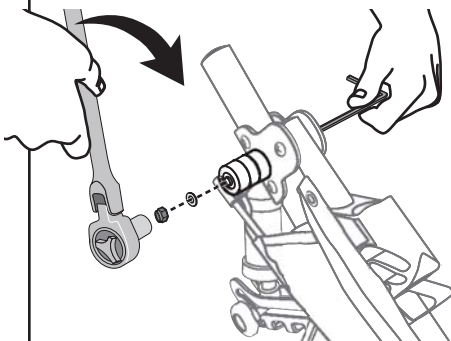
Apply a drop of **Loctite 262** to exposed threads of screw.



## 6 ATTACH LOCKNUT

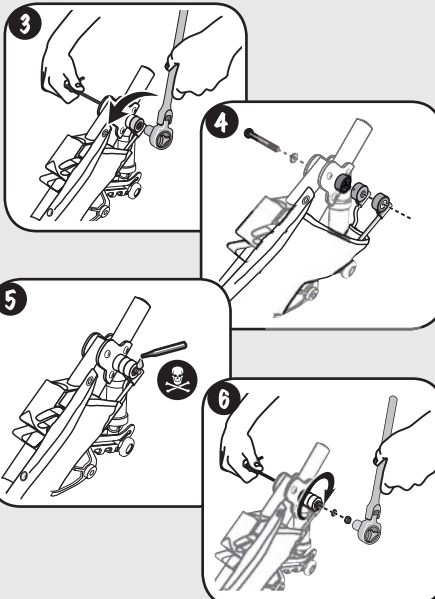
Use an 8mm socket wrench on locknut and a 4mm hex wrench on screw head.

Turn socket wrench clockwise.

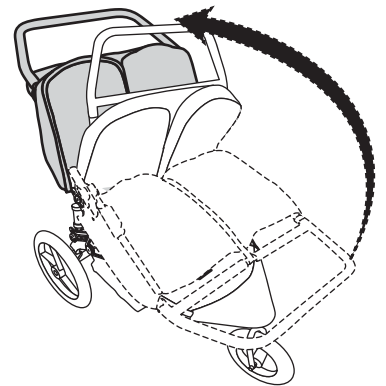


**TIGHTEN FIRMLY (3.7 N·m)**

## 7 REPEAT STEPS 3 through 6 for other side.



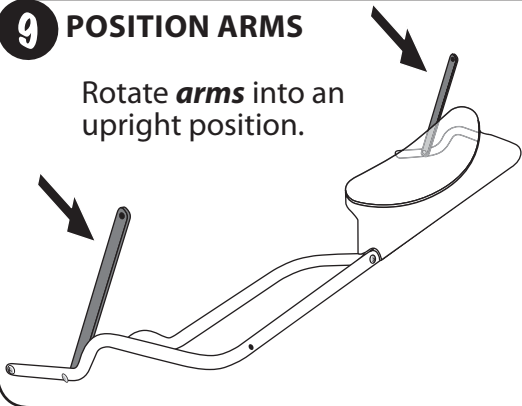
## 8 RAISE HANDLE BAR



## ATTACH MAIN BAR

### 9 POSITION ARMS

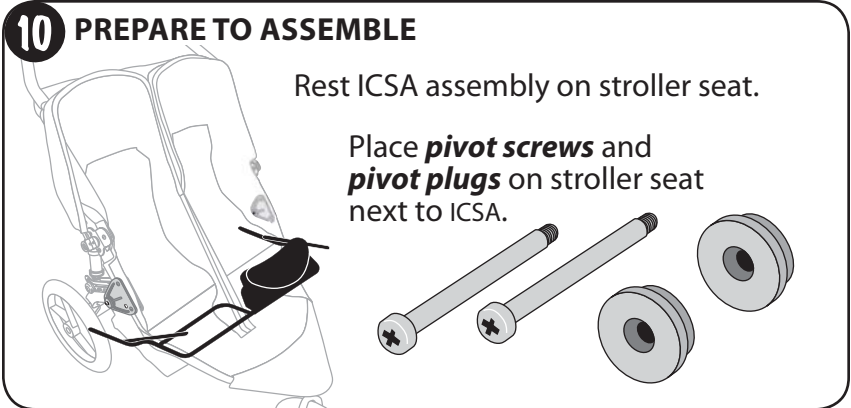
Rotate **arms** into an upright position.



### 10 PREPARE TO ASSEMBLE

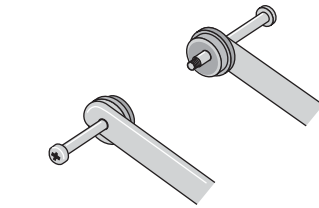
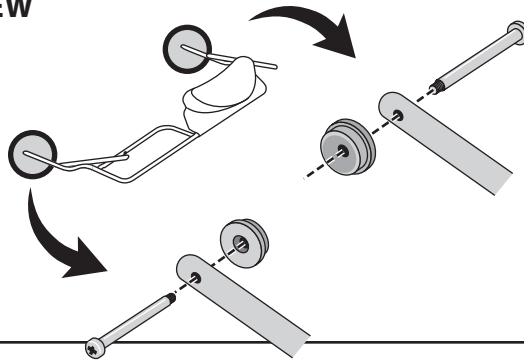
Rest ICSA assembly on stroller seat.

Place **pivot screws** and **pivot plugs** on stroller seat next to ICSA.



### 11 INSERT PIVOT SCREW

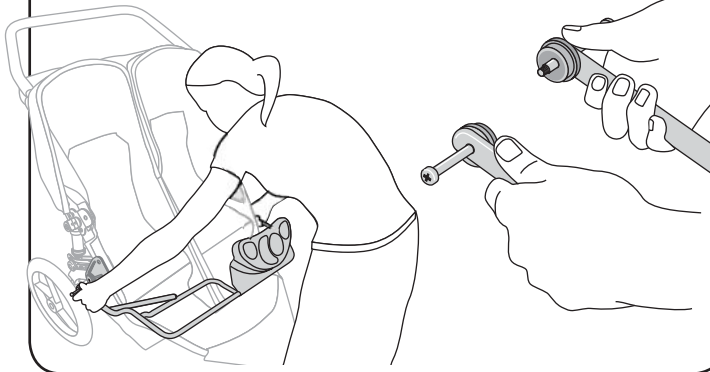
Insert a **pivot screw** through end of **main bar** and into **pivot plug**...



...just far enough to keep the **pivot plug** from slipping off **pivot screw**.

### 12 PICK UP ICSA

Pick up the ICSA assembly holding the **pivot screws** and **pivot plugs** in place with hands.

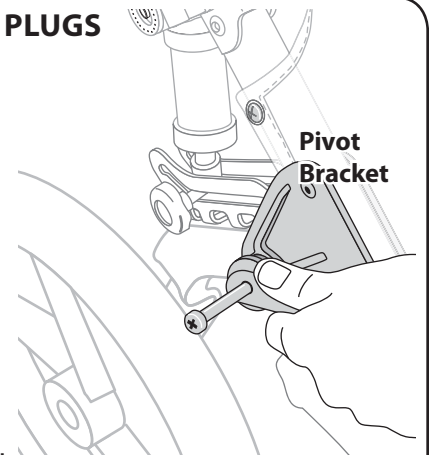


### 13 INSERT PIVOT PLUGS

Position ends of **main bar** over corresponding pivot brackets.

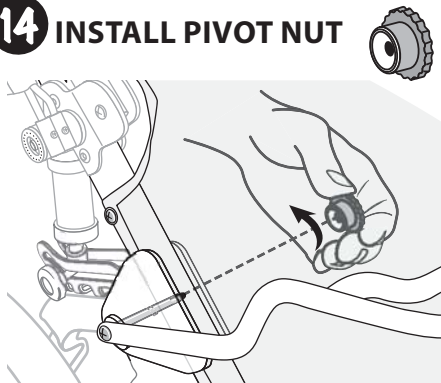
Slip either **pivot plug** into opening on pivot bracket and push **pivot screw** flush against **bar**.

Repeat on other side.



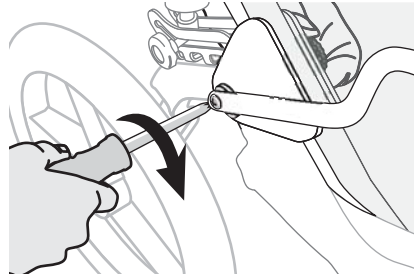
### 14 INSTALL PIVOT NUT

Reach under fabric seat. Thread **pivot nut** onto **pivot screw** as shown.



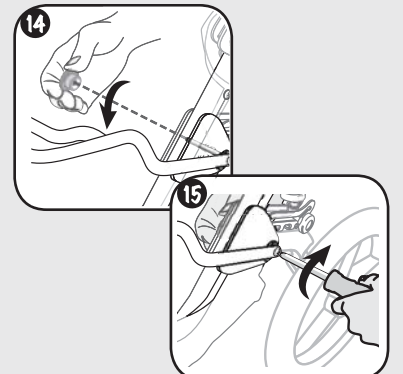
### 15 TIGHTEN PIVOT NUT

Use a Phillips screwdriver to tighten the **pivot screw** clockwise, while holding the **pivot nut**.



### 16 REPEAT STEPS

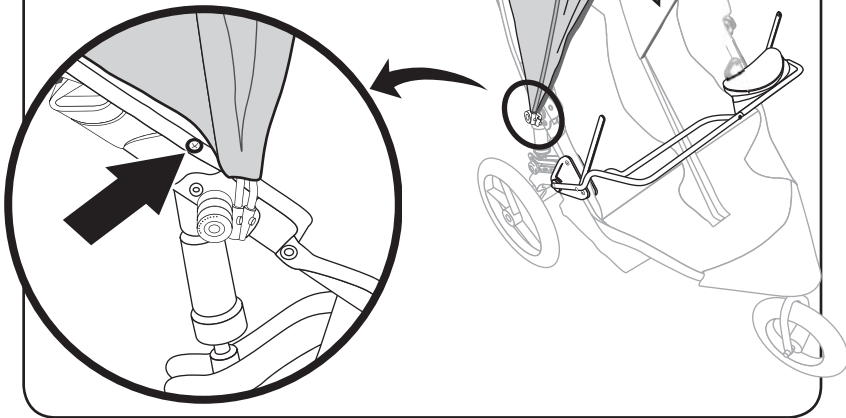
14 and 15 for other side.



# ATTACH RESTRAINT BELT AND ARMS

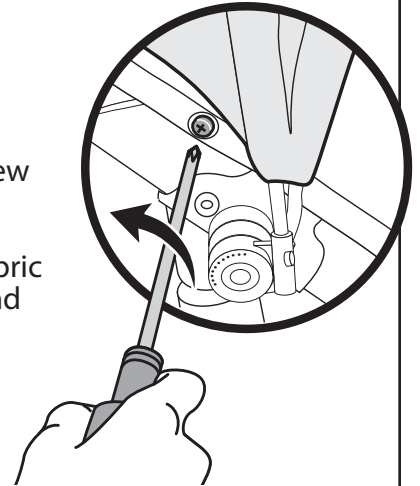
## 17 LOCATE FABRIC SCREW

Extend canopy to expose lower fabric screw.



## 18 REMOVE FABRIC SCREW

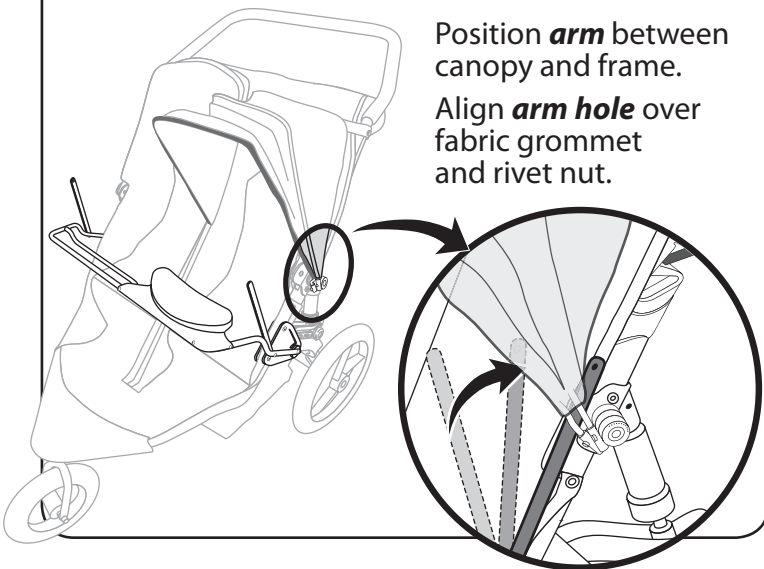
Remove screw with Phillips screwdriver, exposing fabric grommet and rivet nut.



Repeat on other side.

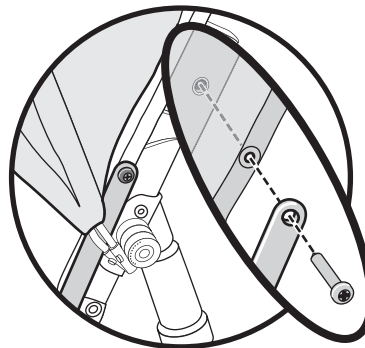
## 19 POSITION ARM (TRAY SIDE)

Position **arm** between canopy and frame.  
Align **arm hole** over fabric grommet and rivet nut.



## 20 SECURE ARM

Insert **sharp screw** through end of **arm**, fabric grommet and into rivet nut.  
**Sharp screw** should tighten flush against **arm**.



### Note:

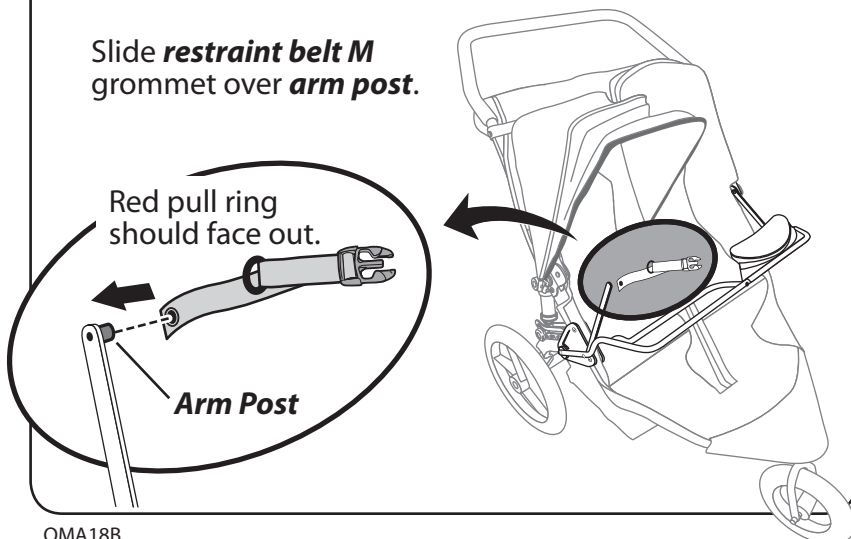
If screw does not turn easily, unscrew and start again.

## 21 ASSEMBLE RESTRAINT BELT M AND ARM

Slide **restraint belt M** grommet over **arm post**.

Red pull ring should face out.

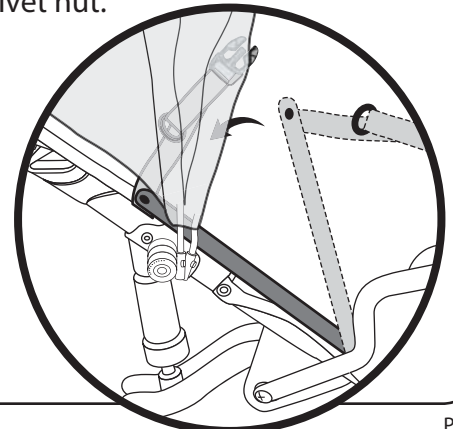
Arm Post



## 22 POSITION ASSEMBLY

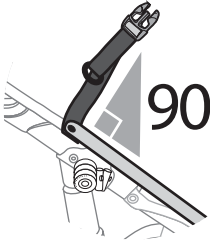
Position **arm** between canopy and frame.

Align **arm hole** over fabric grommet and rivet nut.

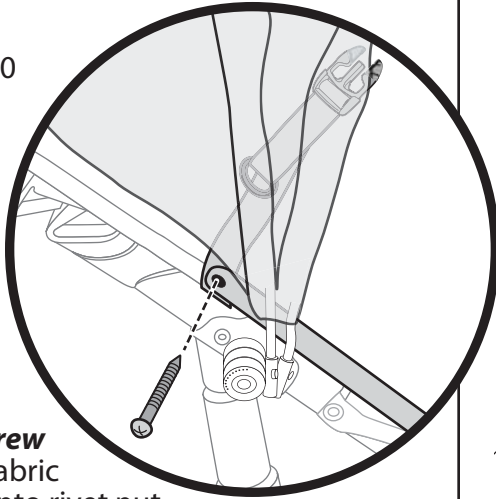


### 23 INSERT SHARP SCREW

Hold strap at a 90 degree angle.

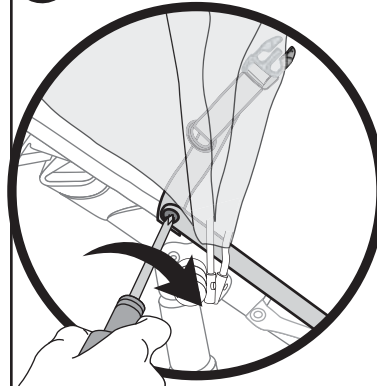


Insert **sharp screw** through **arm**, fabric grommet and into rivet nut.



### 24 TIGHTEN SHARP SCREW

Tighten firmly with Phillips screwdriver.



**Note:**

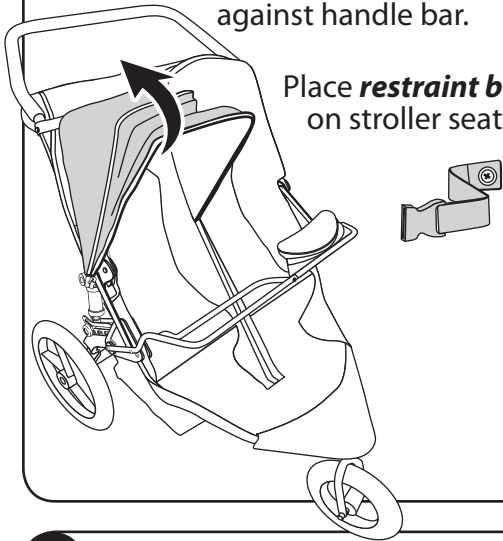
If screw does not turn easily, unscrew and start again.

## ATTACH RESTRAINT BELT F

### 25 PREPARE ASSEMBLY

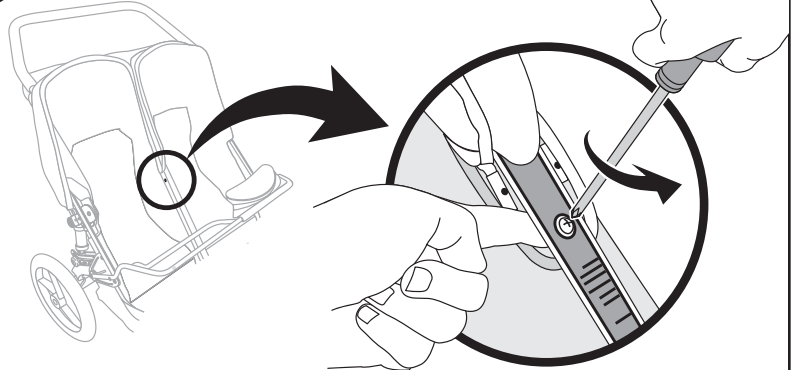
Position both canopies against handle bar.

Place **restraint belt F** on stroller seat.



### 26 REMOVE EXISTING FABRIC SCREW

Slip finger under fabric and plastic mount to hold nut in place.  
Remove lower screw with Phillips screwdriver.

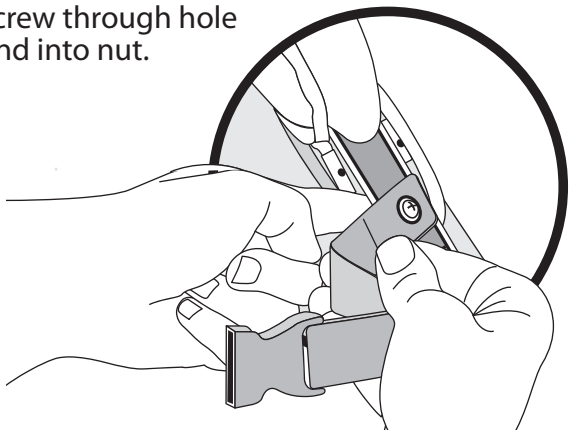


**Note:**

Save screw for right side tray installation.

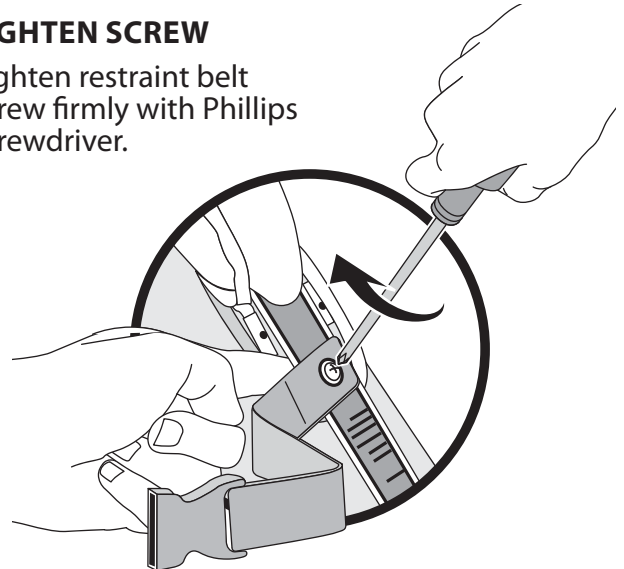
### 27 ATTACH RESTRAINT BELT F

Keeping your finger on the nut, insert restraint belt screw through hole and into nut.



### 28 TIGHTEN SCREW

Tighten restraint belt screw firmly with Phillips screwdriver.

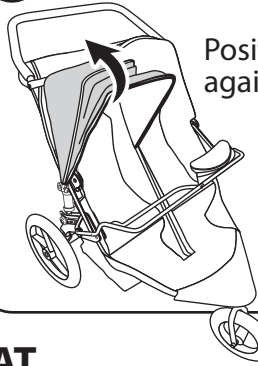


# PREPARE STROLLER FOR INFANT CAR SEAT INSTALLATION

## 29 SET PARKING BRAKE

See the "Parking Brake" section of your stroller owner's manual.

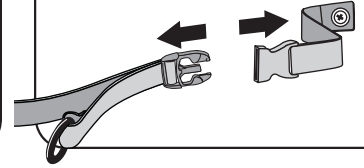
## 30 POSITION CANOPY



Position both canopies against handle bar.

## 31 UNBUCKLE RESTRAINT BELT

Unbuckle **restraint belt**. Place ends outside seat.



# INSTALL INFANT CAR SEAT

## Warning

When installing car seat in the Duallie ICSA for the first time, test fit with the car seat unoccupied to ensure you understand the process. Installing occupied Infant Car Seat on Duallie ICSA for first time may result in accident, serious injury or death.

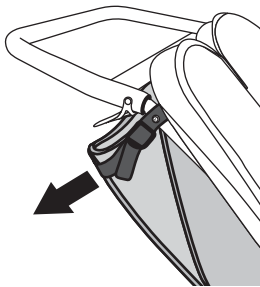
Britax® Go To **32**

Peg Pérego® Go To **40**

Graco® Go To **48**

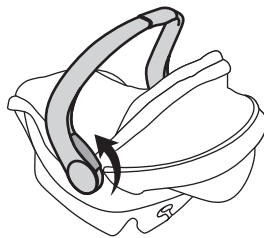
### Britax®

## 32 LOWER SEAT BACK



Lower seat back 7" to 8". See the "Reclining Seat" section of your stroller owner's manual.

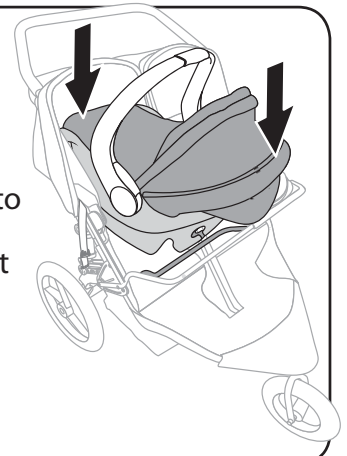
## 33 RAISE HANDLE



Move car seat handle into upright carrying position.

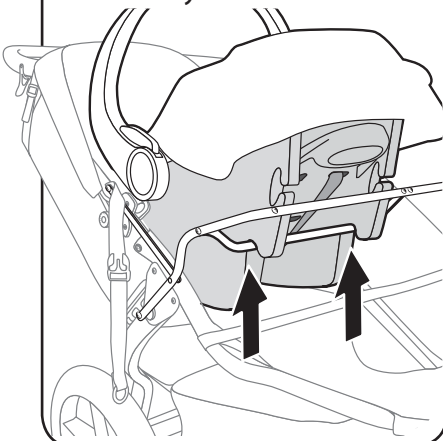
## 34 POSITION CAR SEAT

Place car seat "rear facing" onto ICSA **accessory bar**, in a straight downward motion.



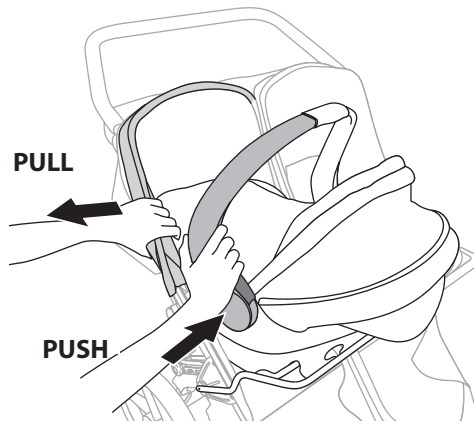
## 35 ENGAGE CAR SEAT

Slide grooves on underside of car seat onto ICSA accessory bar.



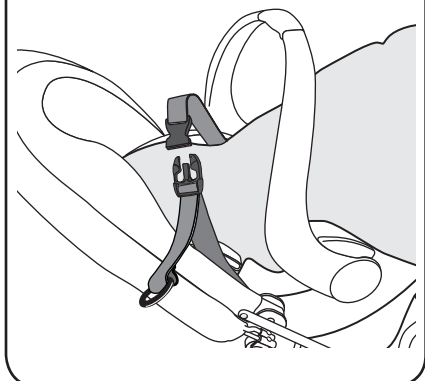
## 36 SET CAR SEAT

Gently pull canopy stays while pushing car seat handle. Car seat should "set" down onto seat of stroller.



## 37 FASTEN RESTRAINT BELT

Fasten **restraint belt** over top of infant car seat as shown.

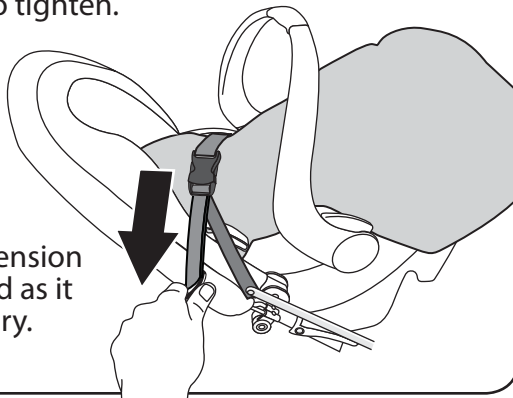


### 38 TIGHTEN RESTRAINT BELT

Pull on red ring to tighten.

#### **Warning**

Be sure restraint belt tension is not constricting child as it may cause serious injury.



### 39 DOUBLE CHECK CAR SEAT IS SECURELY ATTACHED

Pull car seat upward without removing restraint belt.

You should not be able to remove car seat without unfastening restraint belt.

#### **Warning**

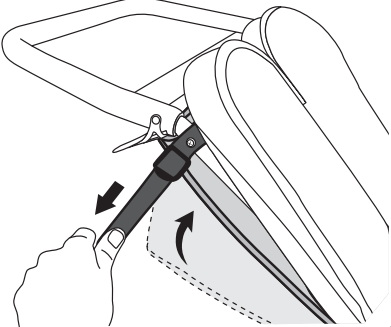
Failure to securely attach car seat may result in serious injury or death.

## TO REMOVE Britax® Go To 56

## Peg Prego®

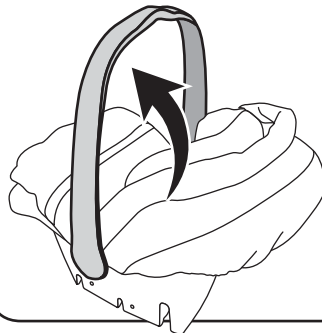
### 40 RAISE SEAT BACK

See the "Reclining Seat" section of your stroller owner's manual.



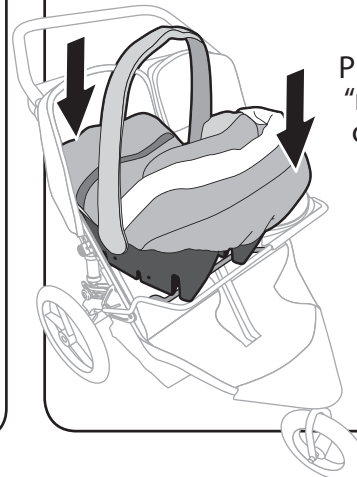
### 41 POSITION HANDLE

Move car seat handle into upright carrying position.



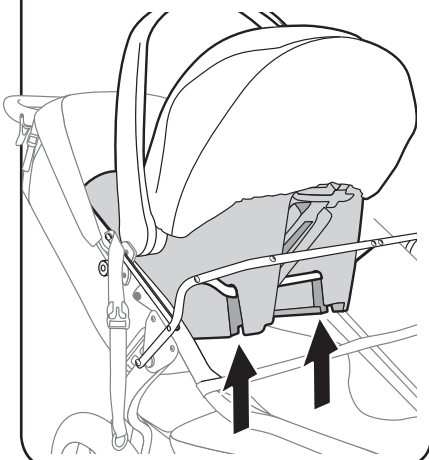
### 42 POSITION CAR SEAT

Place car seat "rear facing" onto ICSA accessory bar, in a straight downward motion.



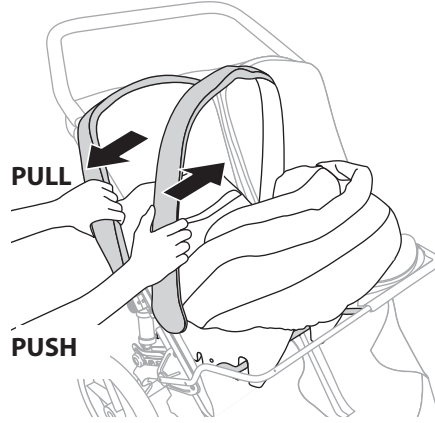
### 43 ENGAGE CAR SEAT

Slide grooves on underside of car seat onto ICSA accessory bar.



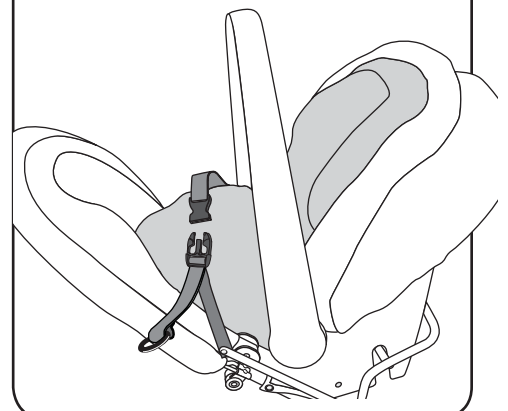
### 44 SET CAR SEAT

Gently pull canopy stays while pushing car seat handle. Car seat should "set" down onto seat of stroller.



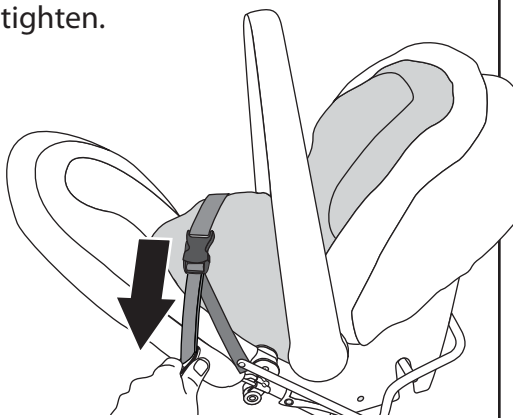
### 45 FASTEN RESTRAINT BELT

Fasten restraint belt over top of infant car seat as shown.



#### 46 TIGHTEN RESTRAINT BELT

Pull on red ring to tighten.



#### **Warning**

Be sure restraint belt tension is not constricting child as it may cause serious injury.

#### 47 DOUBLE CHECK CAR SEAT IS SECURELY ATTACHED

Pull car seat upward without removing restraint belt.

You should not be able to remove car seat without unfastening restraint belt.

#### **Warning**

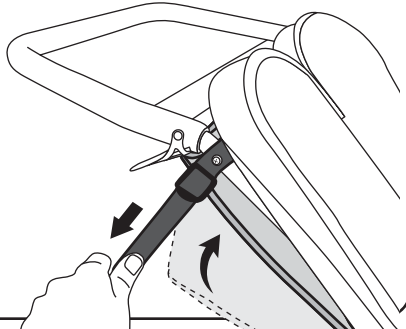
Failure to securely attach car seat may result in serious injury or death.

TO REMOVE Peg Pérego® Go To **56**

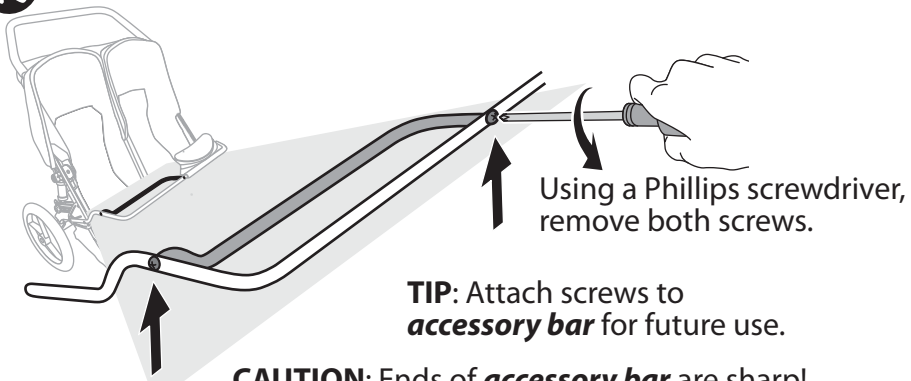
**Graco®**

#### 48 RAISE SEAT BACK

See the "Reclining Seat" section of your stroller owner's manual.

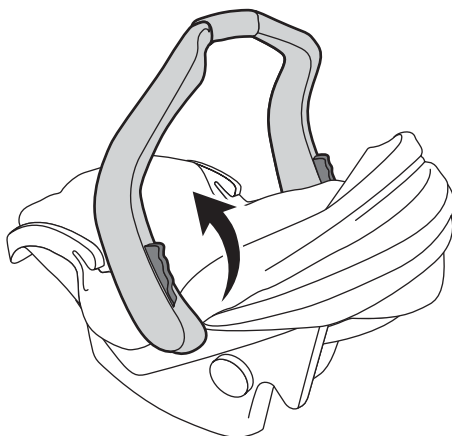


#### 49 REMOVE ACCESSORY BAR

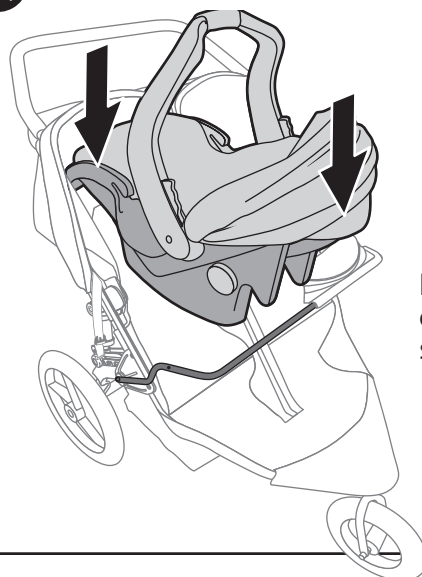


#### 50 POSITION HANDLE

Move car seat handle into upright carrying position.



#### 51 POSITION CAR SEAT

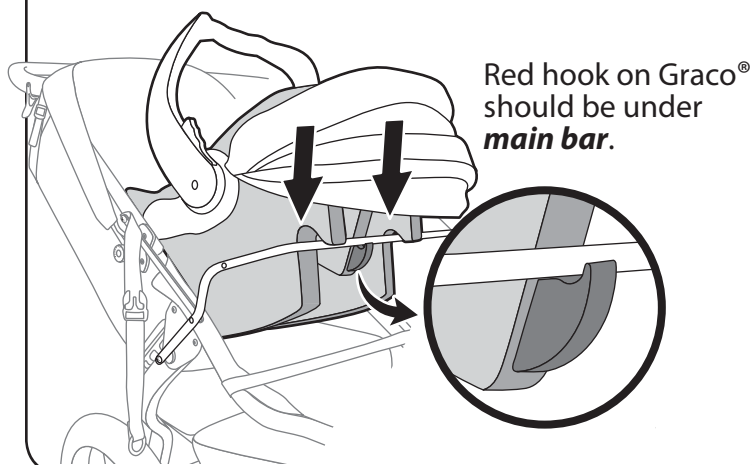


Place car seat "rear facing" onto ICSA **main bar**, in a straight downward motion.



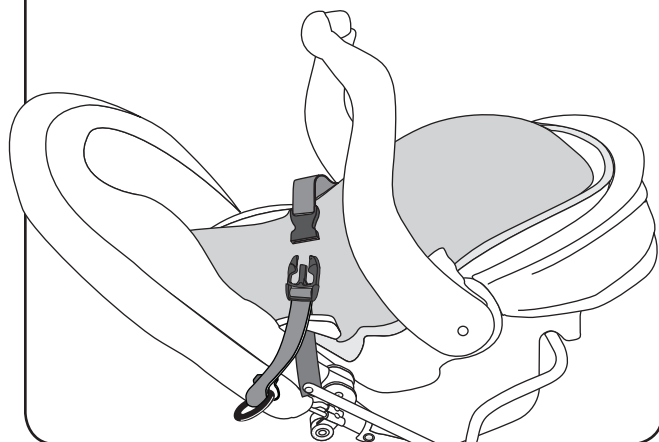
## 52 ENGAGE CAR SEAT

Slide grooves on underside of car seat onto ICSA **main bar**.



## 53 FASTEN RESTRAINT BELT

Fasten **restraint belt** over top of infant car seat as shown.

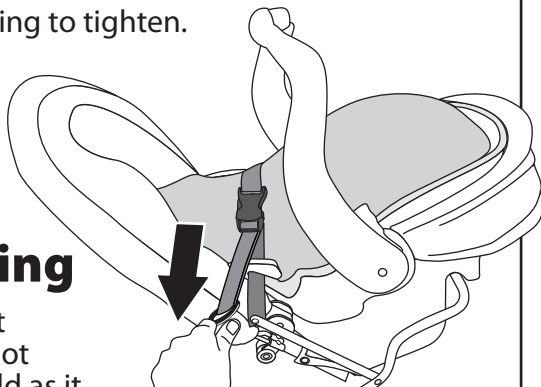


## 54 TIGHTEN RESTRAINT BELT

Pull on red ring to tighten.

### **Warning**

Be sure restraint belt tension is not constricting child as it may cause serious injury.



## 55 DOUBLE CHECK CAR SEAT IS SECURELY ATTACHED

Pull car seat upward without removing restraint belt.

You should not be able to remove car seat without unfastening restraint belt.

### **Warning**

Failure to securely attach car seat may result in serious injury or death.

## TO REMOVE Graco® Go To 56

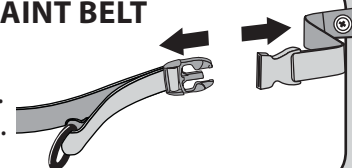
## TO REMOVE CAR SEAT

### 56 SET PARKING BRAKE

See the "Parking Brake" section of your stroller owner's manual.

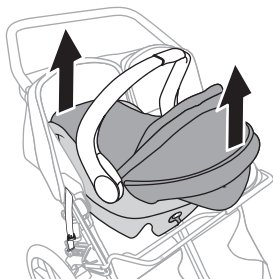
### 57 UNFASTEN RESTRAINT BELT

Unfasten **restraint belt**. Place ends outside seat.



### 58 Britax® Peg Pérego®

With car seat handle in upright position, lift car seat straight up and off ICSA bar.

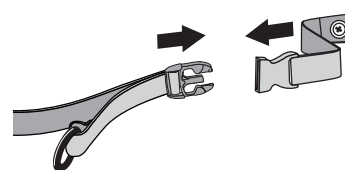


### Graco®

With car seat handle in upright position, squeeze red release button under Graco® car seat canopy, lift car seat straight up and off ICSA bar.

### 59 FASTEN RESTRAINT BELT

Fasten **restraint belt** when not in use.

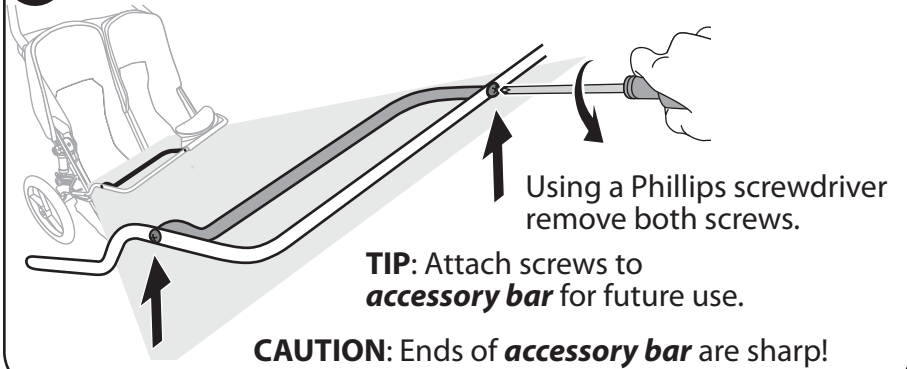


# RIGHT TRAY INSTALLATION

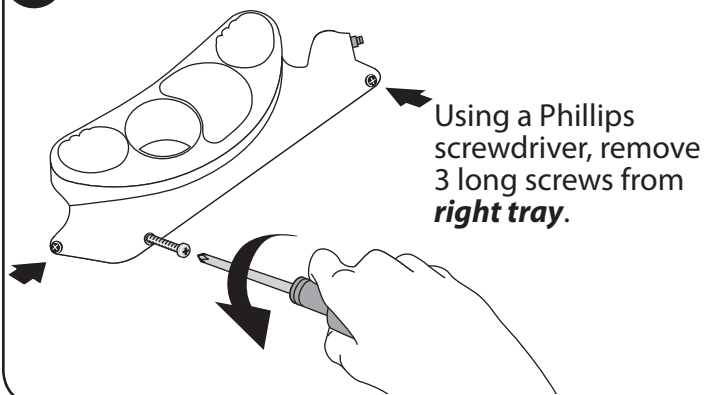
## Warning

Children should not be placed directly in the BOB Stroller seat with the Duallie ICSA installed, unless tray is installed directly in front of child for safety and protection.

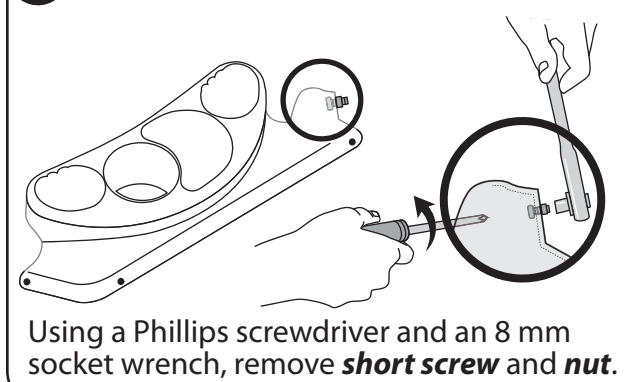
## 60 REMOVE ACCESSORY BAR



## 61 REMOVE LONG SCREWS

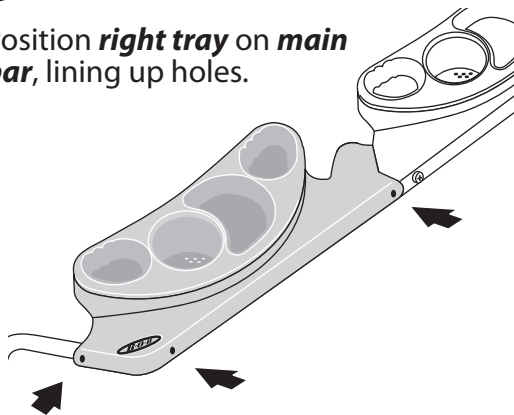


## 62 REMOVE SHORT SCREW AND NUT

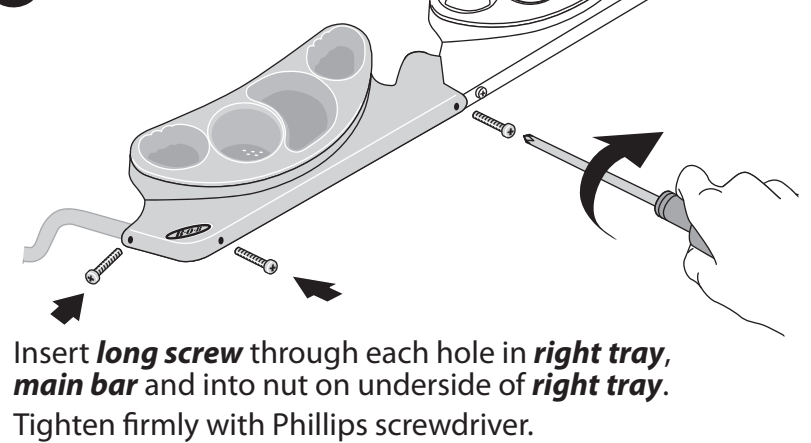


## 63 POSITION TRAY

Position **right tray** on **main bar**, lining up holes.



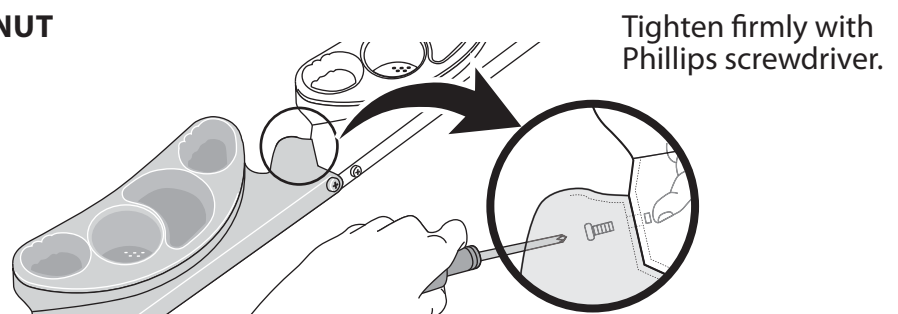
## 64 ATTACH LONG SCREWS



## 65 ATTACH SHORT SCREW AND NUT

Reach under **left tray** and press **nut** into hole.

Reach under **right tray** and insert **short screw** through **right tray**, **left tray** and into **nut**.

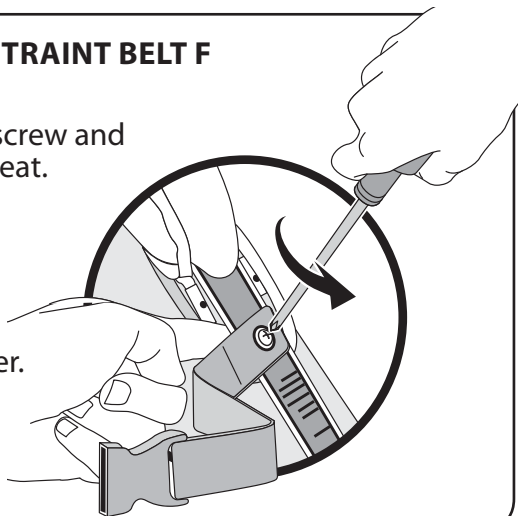


## REMOVE RESTRAINT BELT

### 66 REMOVE RESTRAINT BELT F

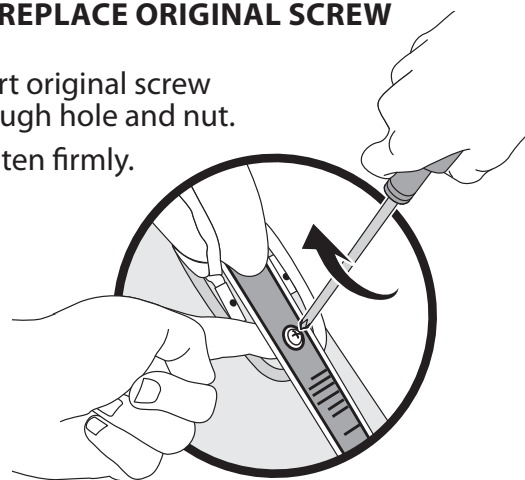
Retrieve original screw and place on stroller seat.

Keeping your finger on the nut, remove **restraint belt screw** with Phillips screwdriver.

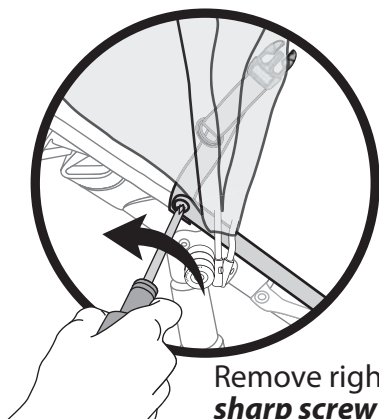


### 67 REPLACE ORIGINAL SCREW

Insert original screw through hole and nut. Tighten firmly.

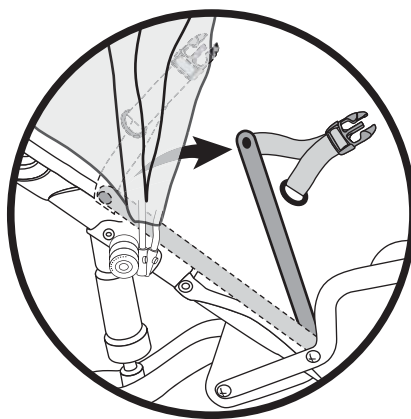


### 68 REMOVE SHARP SCREW



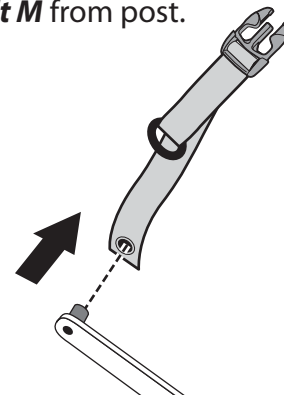
Remove right side **sharp screw** from right side **arm**.

### 69 MOVE ARM FORWARD



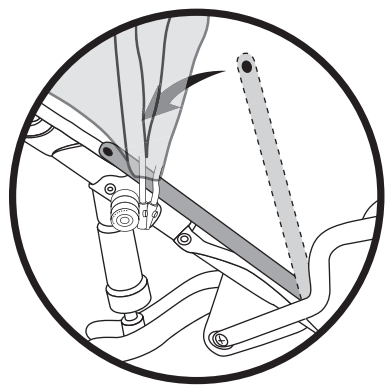
### 70 REMOVE RESTRAINT BELT M

Remove **restraint belt M** from post.



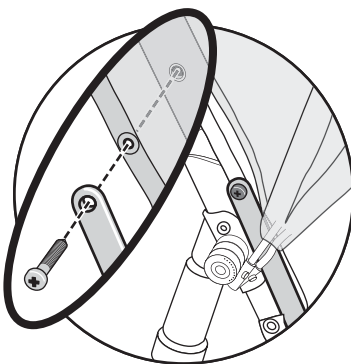
### 71 POSITION ARM

Rotate **arm** so end of **arm** aligns with rivet nut.



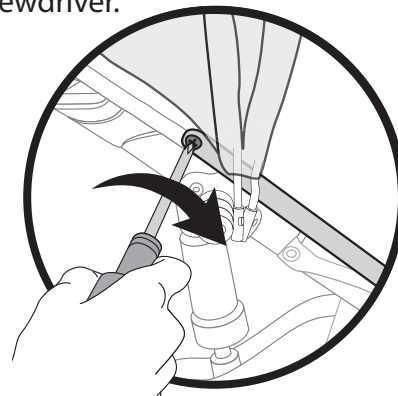
### 72 REPLACE SHARP SCREW

Insert **sharp screw** through end of **arm**, fabric grommet and into rivet nut.



### 73 TIGHTEN SHARP SCREW

Tighten firmly with Phillips screwdriver.



**Sharp screw** should tighten flush against **arm**.

**Note:** If screw does not turn easily, unscrew and start again.



# Duallie Infant Car Seat Adapter Warnings



- The BOB Duallie Infant Car Seat Adapter is designed for use with double seat BOB Strollers and compatible Infant Car Seats. This product is not a universal adapter. Do not use with car seats and stroller models other than those specifically listed in the Stroller and Car Seat Compatibility charts listed on page 1.
- Children should not be placed directly in the BOB Stroller seat with the Duallie ICSA installed, unless tray is installed directly in front of child for safety and protection.
- The Duallie ICSA Restraint Belt can interfere with the accessibility and proper function of the right side safety harness system and the Accessory Bar of the Duallie ICSA can interfere with accessibility to the right seat. Duallie ICSA restraint belt and accessory bar must be removed from the BOB Stroller and Right Tray must be installed prior to placing child directly in right seat. Failure to do so may result in serious injury or death.
- Read and understand all owner's manuals and warnings for all BOB products used with the Duallie ICSA before use.
- Read and understand infant car seat owner's manual before use.
- Always use seat harness of Infant Car Seat to avoid children falling out of stroller.
- Maximum capacity 17.5lb (weight of infant including clothing). Exceeding capacity may cause stroller to become unstable.
- Follow assembly instructions. Failure to properly install this accessory product may result in accidents, severe injury or death. If you are not sure you can install this accessory, contact your BOB retailer and arrange for them to perform the installation.
- Never leave children unattended in the stroller/infant car seat.
- Always secure the infant car seat with the restraint belt when the car seat is placed in the stroller. Failure to do so may result in serious injury or death.
- Always keep your Infant Car Seat handle in the vertical and locked position while in stroller, as extra protection for your child.
- Stroller may become unstable if parcel bags are incorrectly attached or if bags other than those recommended by BOB Trailers, Inc. are used.
- Do not run or jog when using the Duallie ICSA with car seat installed. Doing so may result in serious injury or death.
- Do not use off-road or on uneven terrain when using the Duallie ICSA with car seat installed. Doing so may cause stroller to become unstable and result in accident, serious injury or death.
- Children develop at different rates. Consult with your pediatrician regarding the suitability of the stroller use with your child.



- Loctite 262 is a potentially hazardous chemical. Do not allow contact with skin or eyes. Do not ingest. Use in well ventilated area. Keep out of reach of children and dispose of vial properly. Other safety warnings for Loctite 262 can be found at [www.loctite.com](http://www.loctite.com)

**BOB IS NOT RESPONSIBLE FOR INJURY, DAMAGE OR FAILURE THAT RESULTS FROM OWNERS FAULTY ASSEMBLY OR MAINTENANCE AFTER SHIPPING.**

BOB is a company that produces high quality products designed to promote a healthy outdoor life-style. Go to [www.bobgear.com](http://www.bobgear.com) for our complete line of products. **Before attempting to assemble or use your new Duallie ICSA, read and understand these instructions completely to insure proper assembly and operation.**

If you are unclear on any point, contact your dealer, place of purchase or BOB [toll free 1-800-893-2447] before use. A list of dealers is listed on our website [[www.bobgear.com](http://www.bobgear.com)]. For updates to this manual, our warranty and for other recent product notifications, please visit [www.bobgear.com](http://www.bobgear.com) periodically.

B.O.B, B.O.B Logo, and BOB are proprietary trademarks of BOB Trailers, Inc.

Britax® and Companion® are registered trademarks of Britax Excelsior Ltd. and related companies.

Graco® Snug Ride™ and SafeSeat™ are registered and proprietary trademarks of Graco Children's Products, Inc.

Peg Pérego® Primo Viaggio™ and Primo Viaggio SIP™ are registered and proprietary trademarks of Peg Pérego S.P.A. Corporation.

## LIMITED WARRANTY

BOB Trailers Inc. takes pride in its workmanship and strives to manufacture the best products possible. Therefore, we warranty the Duallie ICSA against defects in material and workmanship subject to the conditions listed below. Since no product is indestructible, it does not cover defects attributable to or resulting from normal wear, abuse or alteration.

- **The Duallie ICSA is warranted for one year from the date of original purchase.**
- **Warranty is only valid for the original purchaser.**
- **Proof of purchase is required to exercise this warranty.**
- **Labor and freight charges are not included.**
- **Normal wear, neglect, abuse, accidents, and improper use are not covered by this warranty.**
- **Warranty claims must be made through an authorized dealer.**
- **This warranty is limited to the repair or replacement of the defective part. BOB Trailers, Inc. shall in no event be responsible for consequential or special damages.**
- **This Limited Warranty is the only express or implied warranty applicable to BOB Trailers, Inc. Any implied warranties, including warranties of merchantability and fitness shall be limited in scope and duration in accordance with this limited warranty.**